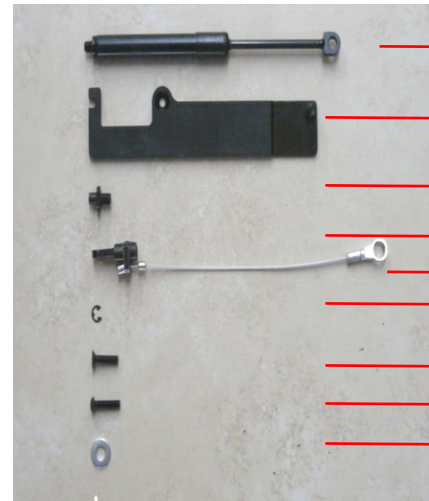


# The EZDown installation guide for MAZDA BT50 (2006 - 2011)



**STABILUS**



**WARNING**  
THIS TAIL GATE HAS  
BEEN FITTED WITH  
THE EZDOWN.

PART DESCRIPTION	QTY	PART NUMBER
Damper	1	013393
Bracket Kit	1	ED0204
Top Stud	1	ED0202
Top Assy	1	ED0201
Cable	1	ED0205
Circlips	2	ED0206
M6 Countersunk screw	1	ED0207
M6 Mushroom head screw	1	ED0208
2mm Washer	1	ED0005
Warning Sticker	1	ED0006

There are two parts of this vehicle that you will be working on:

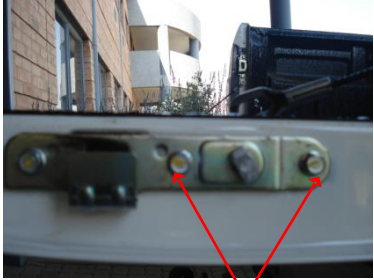
- A/ Tail gate pillar
- B/ Tail gate bracket hinge

Please note the safety guidelines with reference to loading weight on tailgate after installation of EZDown .

Visit our website at [www.ezdown.co.za](http://www.ezdown.co.za) to see EZDown in action.

Family Safety . Convenience . Easy to assemble and install . Hands free lowering . Eliminates damage to vehicle . Cost effective

## STEP 1



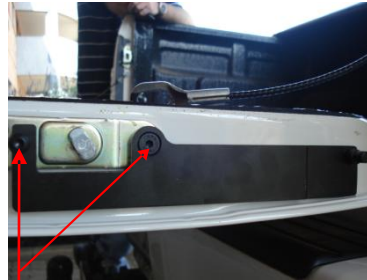
Remove the two 6mm bracket bolts which are highlighted.

## STEP 2



Disconnect the safety cable.

## STEP 3



Fit the bracket as shown in the photo using 1 x M6 countersunk and screw 1 x M6 mushroom head screw.

## STEP 4



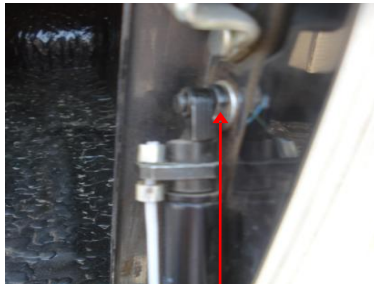
Remove the tailgate cable stud.

## STEP 5



Replace the tailgate cable stud with EZDown upper stud using 2mm washer.

## STEP 6



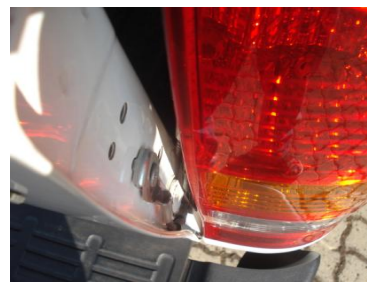
Secure circlips to stud in order to hold EZDown damper in place.

## STEP 7



Place the EZDown with piston rod facing down on the lower bracket.

## STEP 8



Open and close the tailgate slowly to check alignment and that the cable does not interfere.

## STEP 9



Fit WARNING sticker to the tailgate to ensure that the tailgate does not get overloaded.

## STEP 10

Please ensure that your OEM parts are stored safely.